

## Model ECX60 - External Single Halyard

10" gold anodized  
aluminum ball

Double sheave truck,  
cast aluminum revolving type

(1) 3/8" dia. halyard (#12 poly)

(3) Swivel snaps with  
vinyl covers

(1) 9" Cast aluminum cleat

Spun aluminum flash collar

3000 PSI concrete  
(supplied by others)

Hardwood wedges  
(supplied by others)

Dry sand tightly tamped  
(supplied by others)

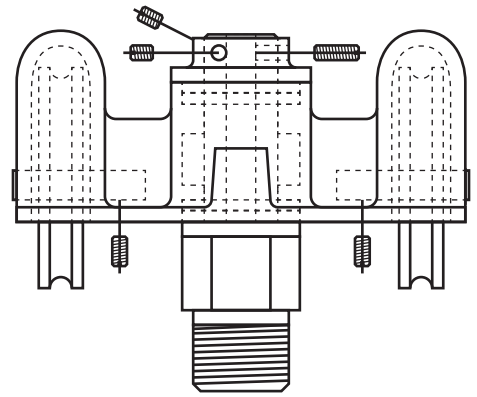
Foundation sleeve -16 ga  
galvanized steel

Steel centering wedges

3/16" Steel base plate

3/16" Steel support plate  
welded to ground spike

3/4" Lightning ground spike



### Double Sheave Truck Detail

Revolving truck  
Cast aluminum body  
Stainless steel ball bearings  
Cast aluminum sheaves  
Cast aluminum spindle

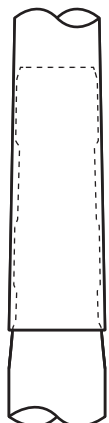
Exposed length: 60'-0"  
Tapered portion: 44'-6"  
Overall length: 66'-0"

Cleat height: 5'-0"  
Straight portion: 21'-6"  
Foundation: 6'-10"  
6'-0"

All shafts with overall  
length of more than  
38'-6" are shipped in  
multiple sections.

Each section is matched  
and marked for field  
assembly. Exposed  
portion of jam sleeve  
must be **well lubricated**  
prior to assembly.

1-1/2" maximum gap  
allowed for field fitting.



**THE FLAG LOFT**  
**1900 DELMAR BLVD**  
**ST LOUIS MO 63103**  
**800-995-3524**

90mph  
Flagged

Exposed Height \_\_ 60'-0"  
Overall Height \_\_ 66'-0"  
Butt Diameter \_\_ 10"  
Top Diameter \_\_ 4"  
Wall Thickness \_\_ .188"  
Ships in 3 sections

Ground Set Tapered  
Aluminum Flagpole  
ALLOY 6063T6  
80 grit polish

**EDER POLE  
MANUFACTURER**